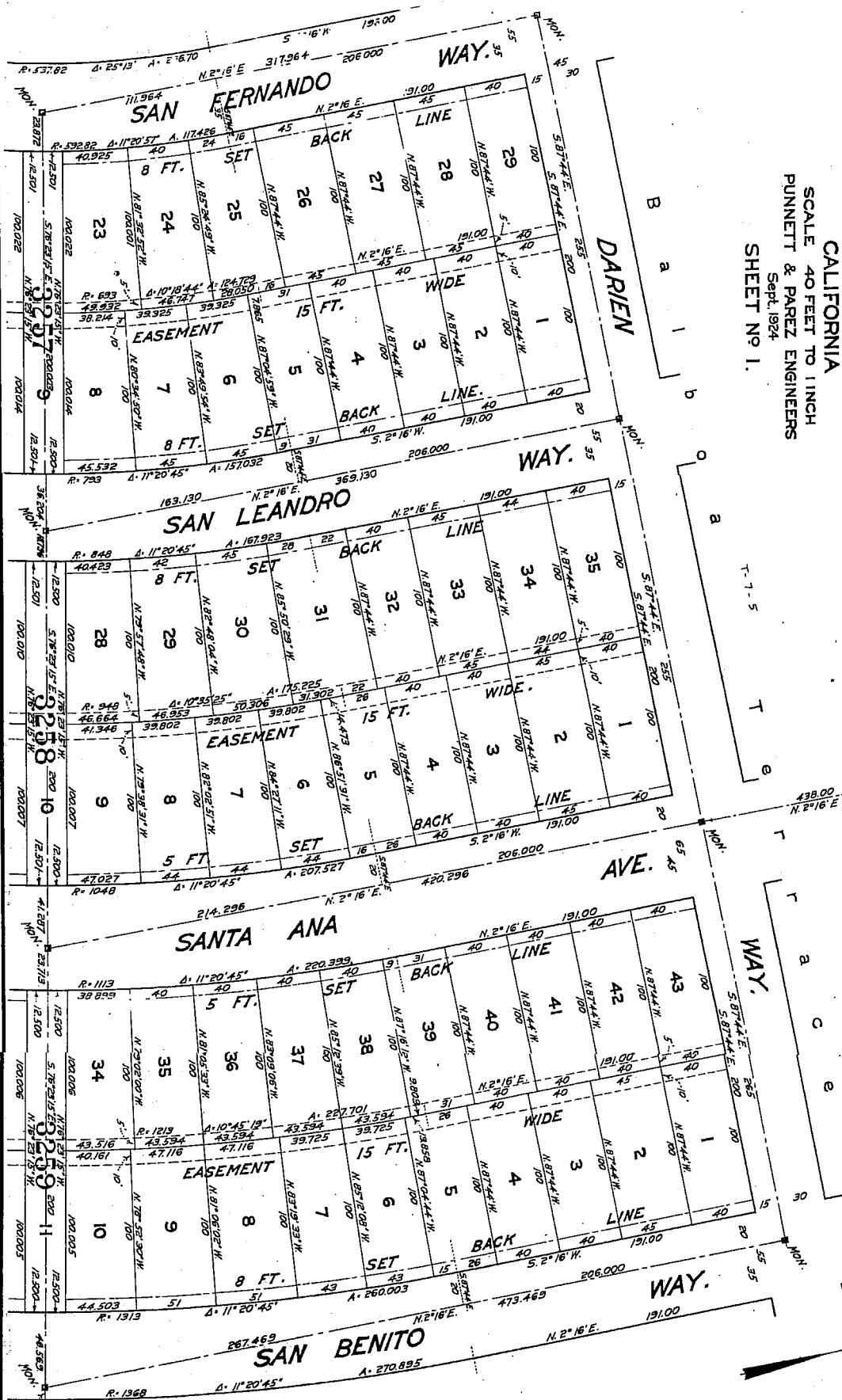


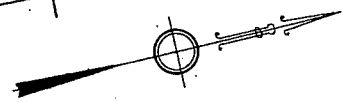


**MAP OF**  
**BLOCKS 3257 3258 AND 3259**  
**OF**  
**BALBOA TERRACE ADDITION**  
**SAN FRANCISCO**  
**CALIFORNIA**

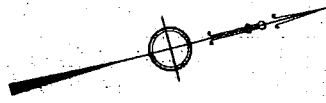
SCALE 40 FEET TO 1 INCH  
 PUNNETT & PAREZ ENGINEERS  
 Sept. 1924  
 SHEET NO. 1.



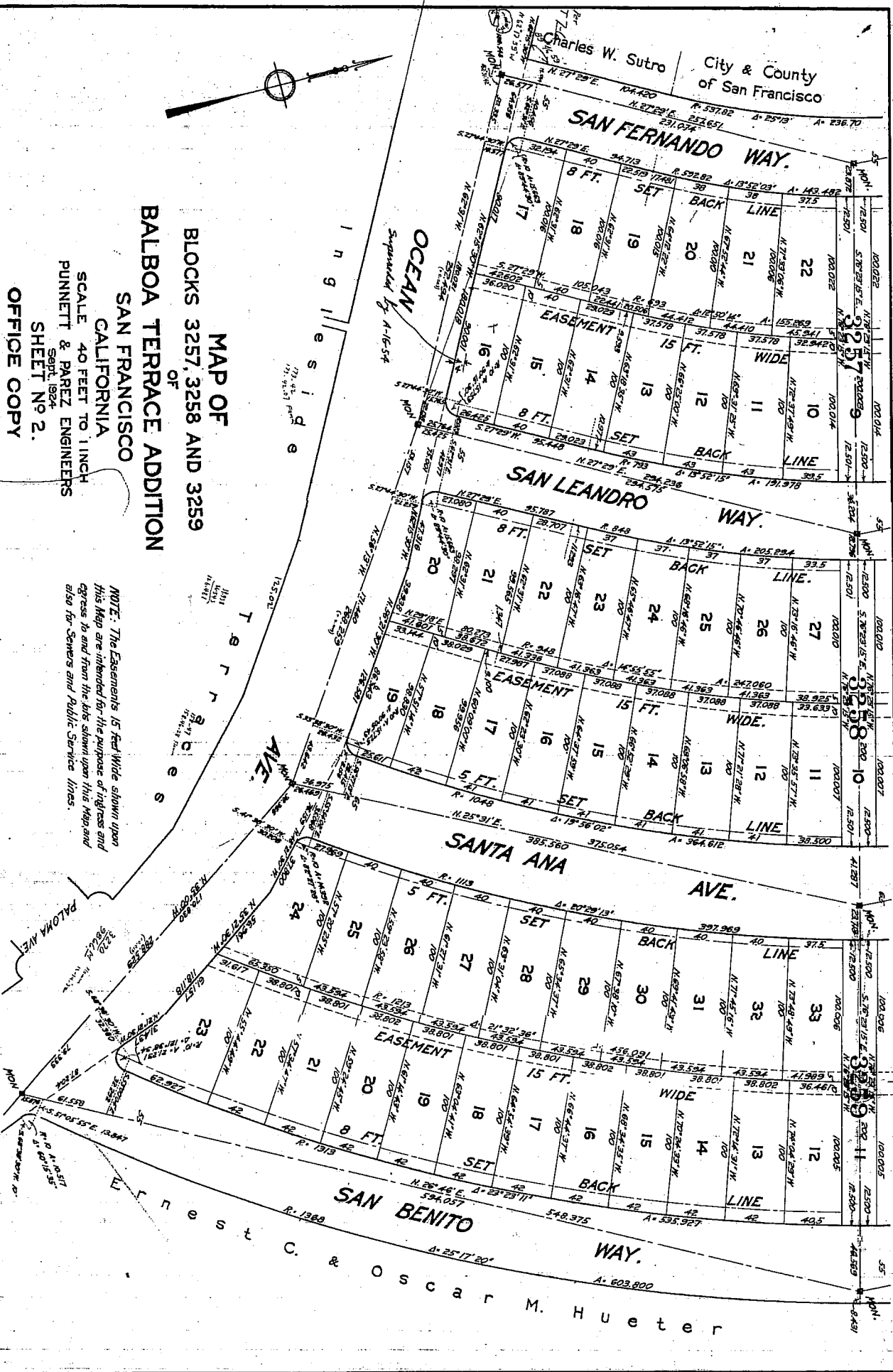
MONTEREY BLVD.  
 NOTE: The Easements 15 feet Wide shown upon this Map are intended for the purpose of ingress egress to and from the lots shown upon this Map, and also for Sewers and Public Service Lines.



City & County  
of San Francisco



**MAP OF**  
**BLOCKS 3257, 3258 AND 3259**  
**OF**  
**BALBOA TERRACE ADDITION**  
**SAN FRANCISCO**  
**CALIFORNIA**  
SCALE 40 FEET TO 1 INCH  
PUNNETT & PAREZ ENGINEERS  
Sept. 1924  
SHEET No 2.  
OFFICE COPY



*NOTE: The Easements 15 feet Wide shown upon this Map are intended for the purpose of rights and access to and from the lots shown upon this Map and also for Sewers and Public Service Lines.*

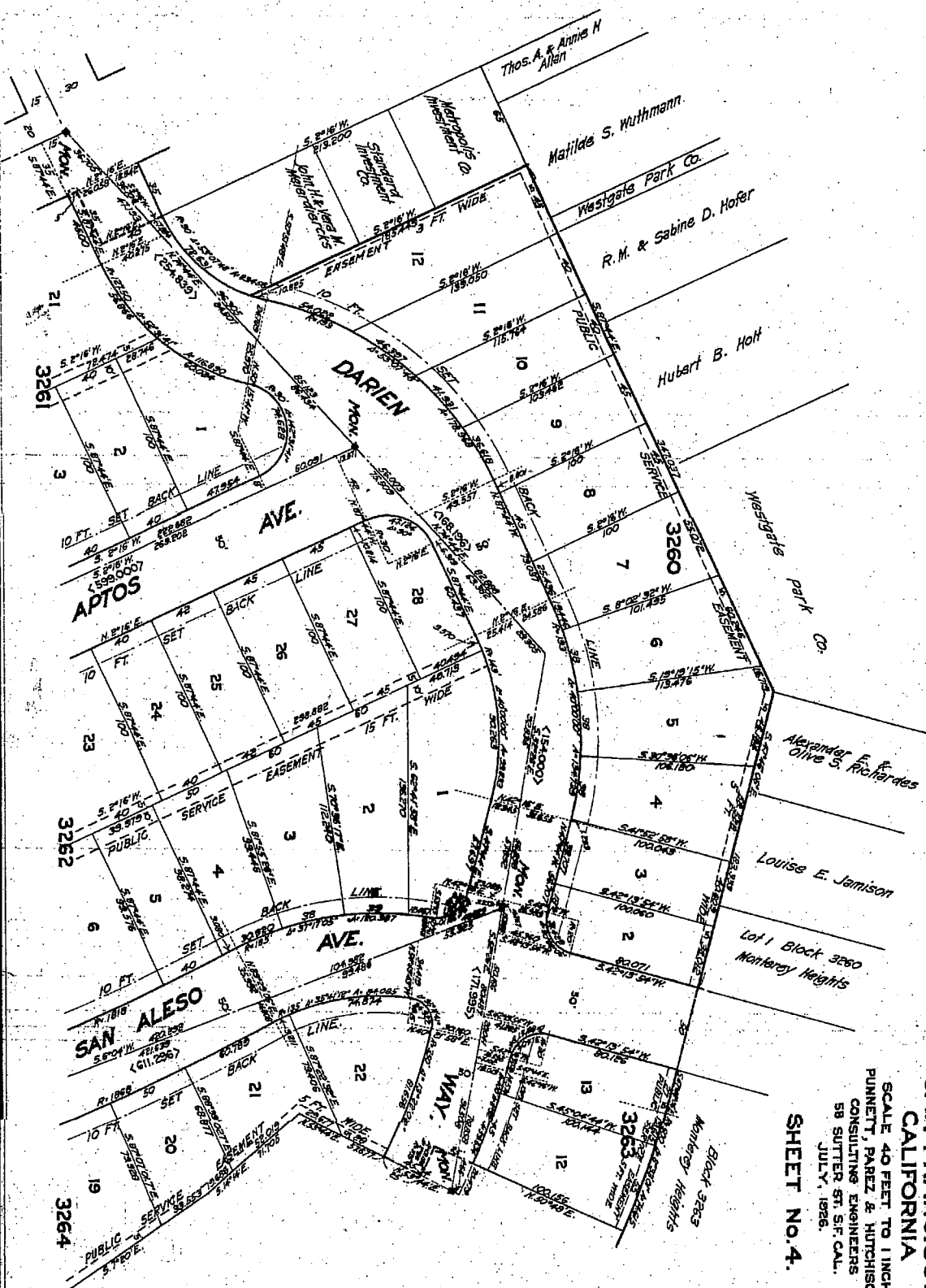
OFFICE COPY

**San Benito Way.**  
A. 603.800  
Oscar M. Hueter

CITY ENGINEERS OFFICE  
CITY PROPERTY  
SAN FRANCISCO

**OFFICE COPY  
MAP OF  
BLOCKS 3260 TO 3269 INCL.  
BALBOA TERRACE ADDITION  
SAN FRANCISCO  
CALIFORNIA**

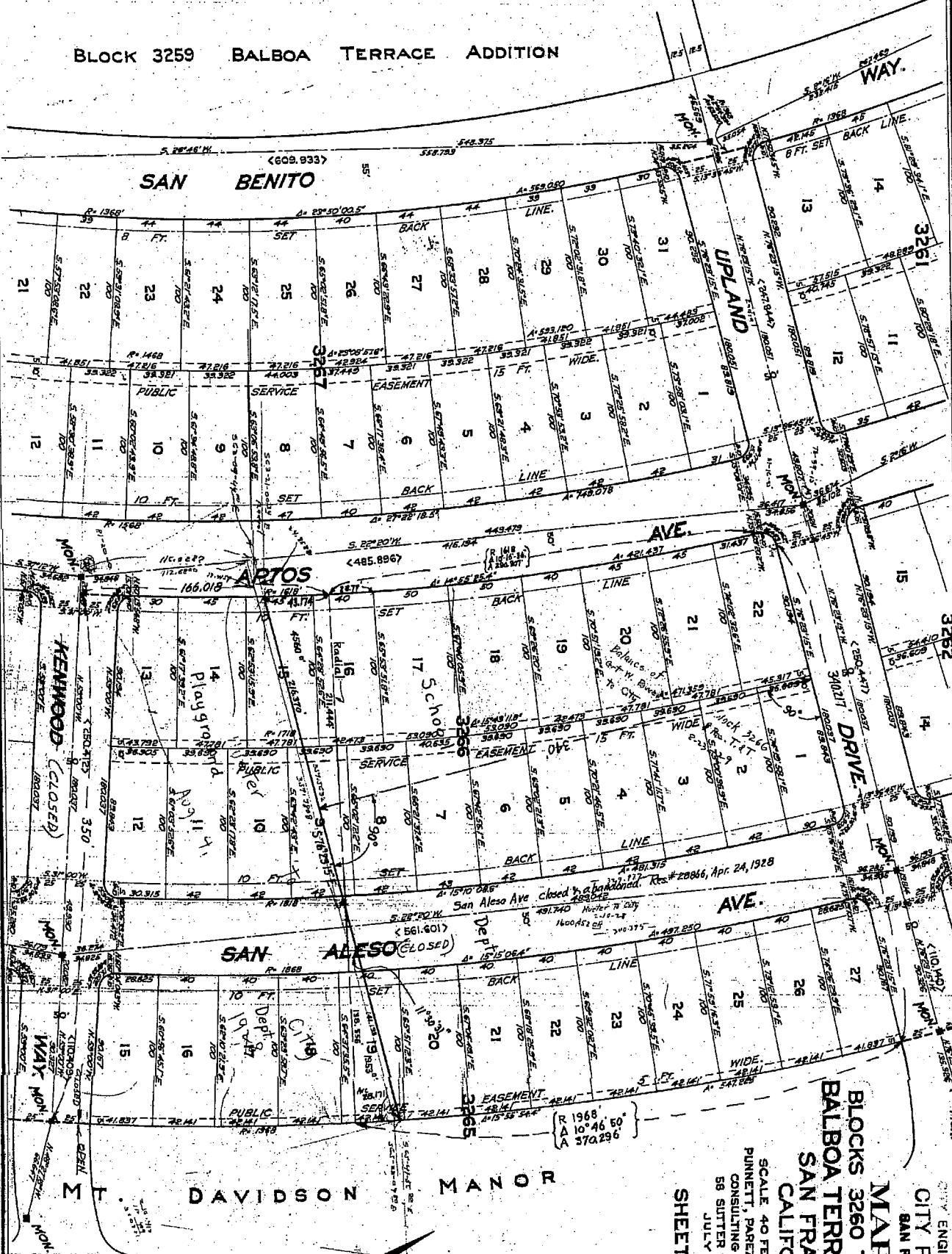
SCALE 40 FEET TO 1 INCH  
PUNNETT, PAREZ & HUTCHISON  
CONSULTING ENGINEERS  
58 SUTTER ST. S.F. CAL.  
JULY, 1926.  
**SHEET NO. 4.**



M.T. DAVIDSON MANOR



BLOCK 3259 BALBOA TERRACE ADDITION



OFFICE COPY

CITY ENGINEERS OFFICE  
 CITY PROPERTY  
 SAN FRANCISCO

**MAP OF**  
 BLOCKS 3260 TO 3269, INCL.  
 BALBOA TERRACE ADDITION  
 SAN FRANCISCO  
 CALIFORNIA

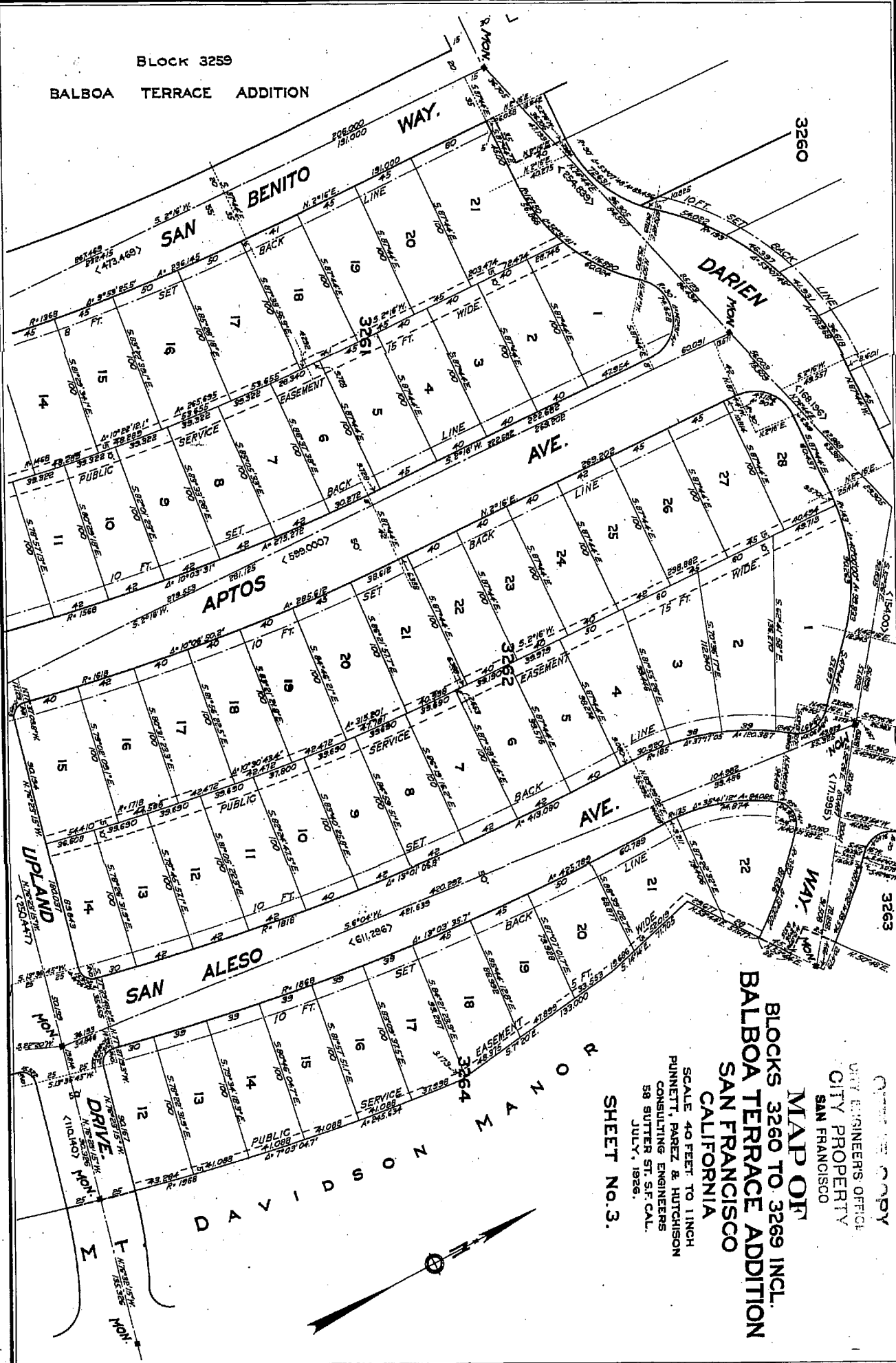
SCALE 40 FEET TO 1 INCH  
 PUNNETT, PAREZ & HUTCHISON  
 CONSULTING ENGINEERS  
 58 SLITTER ST. S.F. CAL.  
 JULY, 1926.

**SHEET NO. 2.**

Red-lined by public 1-24-30  
 See 2855 3245  
 613-779-

BLOCK 3259

BALBOA TERRACE ADDITION



CITY ENGINEER'S OFFICE  
 CITY PROPERTY  
 SAN FRANCISCO  
**MAP OF**  
 BLOCKS 3260 TO 3269 INCL.  
 BALBOA TERRACE ADDITION  
 SAN FRANCISCO  
 CALIFORNIA  
 SCALE 40 FEET TO 1 INCH  
 PUNNETT, PAREZ & HUTCHISON  
 CONSULTING ENGINEERS  
 58 SUTTER ST. S.F. CAL.  
 JULY, 1926.  
**SHEET NO. 3.**

